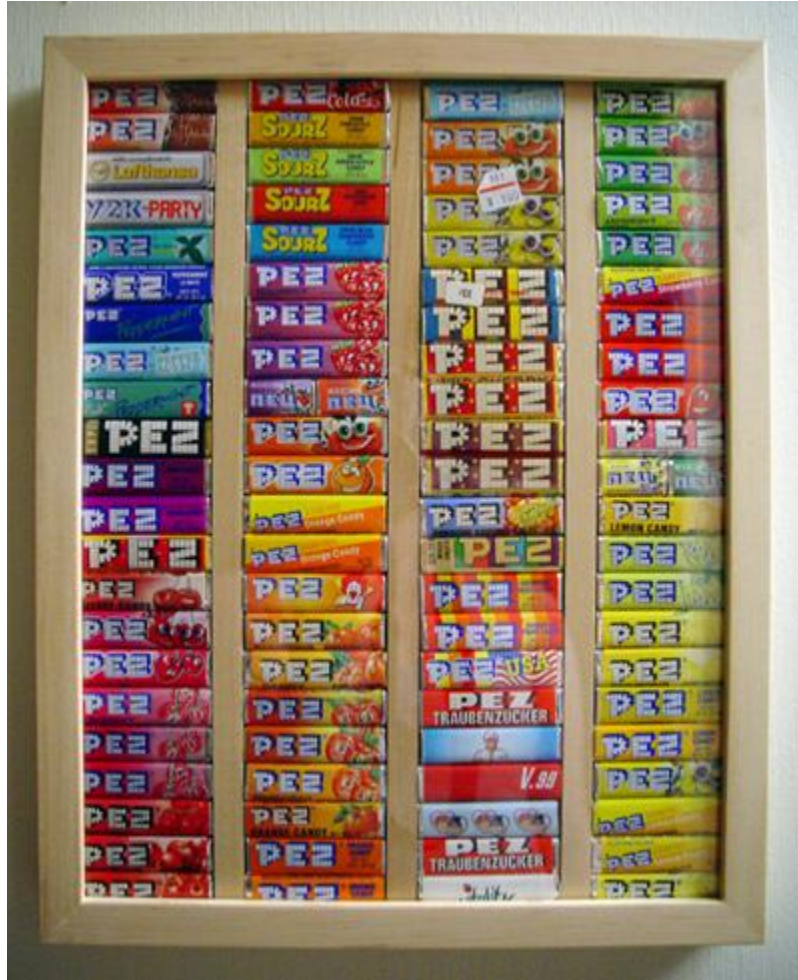


# Candy Pack Display



So simple and so awesome!

## Supplies

- ❖ 11x14" piece of Plexiglas at Home Depot (\$2)
- ❖ 3 thin (3/8" deep x 1/2" wide) strips of wood (balsamwood works well) cut to 14" long (\$5, in the dollhouse building supplies at crafts store; Home Depot didn't have wood strips that thin)
- ❖ Unfinished wood shadowbox frame (crafts store, \$15)
- ❖ 2 pieces of foam core board (corrugated cardboard would work just as well) for backing (\$3.50 at craft store; cut to 11x14" for backing)
- ❖ 3-4 brad-type nails
- ❖ Picture hanger

## Instructions

- ❖ Put Plexiglas in the frame,
- ❖ Place the wood strips placed vertically to make 4 rows the exact width of candy packs
- ❖ Glue the wood strips in place to the frame
- ❖ Apply foam core board/corrugated cardboard backing
- ❖ Hold in place with 3-4 brad-type nails,
- ❖ Attach a picture hanger to the top and
- ❖ Hang it up!

This technique isn't just for candy packs. Use it for any PEZ that you want to display and protect from dust.